

Compression Connections

BURNDY®

Copper Compression – Flex – Long Barrel – Belled End – No Inspection Window

C-54

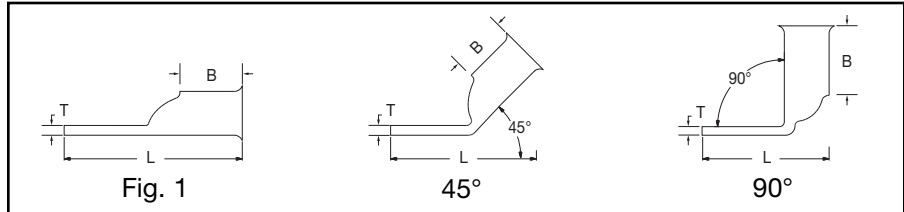
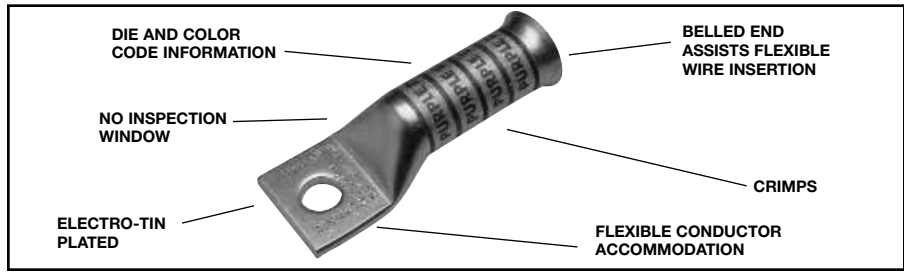
ONE HOLE HYLUG™ FLEX CONDUCTOR LONG BARREL BELLED END

**TYPES YA-TC-FXB,
YAV-TC-FXB**

UL Listed 90° C,
600 Volts to 35 kV ◆

45° and 90° angles are available.

Please contact
Customer Service
to order:
1-800-346-4175



Catalog Number	Fig #	Conductor		Stud Hole Size	Tongue Width	Figure Dimensions			▲ Installation Tooling					Wire Strip Length	
		AWG	MM ²			(B)	(T)	(L)	Dieless (# of crimps)	Mechanical	Hydraulic		Color Code		Die Index
										MD6, OUR840, MD7-34R	BCT500HS, Y500CTHS	Y35, Y39, Y750 Y46*, PAT750			
YA8C-TC14-FXB	1	37/24 #8 Weld 8 AWG	** 10	1/4"	.41"	.90"	.08"	1.76"	MRC840 (2) MY29-11 (2) Y1MRTC (2) Y81KFT (1) Y81KFTMBH (1) PAT81KFT-18V (1)	W8CVT (2)	W8CVT (2)	U8CRT (2)	Red	49	1"
YAV6C-TC10-FXB	1	61/24 #6 Weld #6 AWG	** 16	8-10	.48"	1.22"	.08"	1.90"	MY29-11 (2) Y1MRTC (2) Y644HS (1) Y81KFT (1) Y81KFTMBH (1) PAT81KFT-18V (1)	W5CVT (2)	W5CVT (2)	U5CRT (2)	Blue	7	1-5/16"
YAV6C-TC14-FXB	1	91/24 #5 Str.		1/4"				2.11"	Y81KFTMBH (1) PAT81KFT-18V (1)						
YAV5C-TC14-FXB	1	#5 AWG		1/4"	.44"	1.22"	.07"	2.11"	MY29-11 (2) Y1MRTC (2) Y644HS (1) Y81KFT (1) Y81KFTMBH (1) PAT81KFT-18V (1)	W5CVT (2)	W5CVT (2)	U5CRT (2)	Blue	7	1-5/16"
YAV4C-TC10-FXB	1	91/24 105/24 #4 Weld #4 AWG		8-10	.55"	1.22"	.09"	2.03"	MY29-11 (2) Y1MRTC (4) Y644HS (1) Y81KFT (1) Y81KFTMBH (1) PAT81KFT-18V (1)	W4CVT (2)	W4CVT (2)	U4CRT (2)	Gray	8	1-5/16"
YAV4C-TC14-FXB	1		1/4"	.55"	1.22"	.09"	2.16"								
YAV4C-TC516-FXB	1		5/16"	.63"	1.22"	.09"	2.22"								
YAV2C-TC10-FXB	1	125/24 150/24 #2 Weld #2 AWG	35	8-10	.67"	1.35"	.10"	2.23"	MY29-11 (2) Y1MRTC (4) Y644HS (1) Y81KFT (1) Y81KFTMBH (1) PAT81KFT-18V (1)	W2CVT (2)	W2CVT (2)	U2CRT (2)	Brown	10	1-7/16"
YAV2C-TC516-FXB	1			5/16"				2.42"							
YAV1C-TC10-FXB	1	175/24 225/24 #1 Weld #1 AWG		8-10	.69"	1.50"	.12"	2.40"	MY29-11 (2) Y644HS (1) Y81KFT (1) Y81KFTMBH (1) PAT81KFT-18V (1)	W1CVT (2)	W1CVT (2)	U1CRT-1 (2)	Green	11	1-9/16"
YAV1C-TC516-FXB	1			5/16"				2.59"							

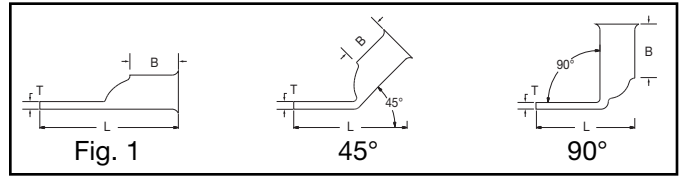
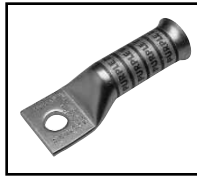
* Use PUADP-1 adapter with U dies in Y46 HYPRESS™
 ** The MM² conductor sizes referenced here are for both Class 2 and Class 5 conductor.
 *** The MM² conductor sizes listed are the recommendations for Class 5 conductor.

‡ P44RT for use with Y46 HYPRESS™ only. PUADP-1 adapter not required.
 ▲ See tooling section of this catalog for complete tool and die listings. Use ONLY color-coded die recommendations

for -FX connectors. For nest/indentor system contact factory.
 ◆ For applications greater than 2000 Volts consult cable manufacturer for voltage stress relief instructions.
Note: All dimensions shown are for reference only.

Blue highlighted items are industry standard and most frequently ordered.

**ONE HOLE HYLUG™
FLEX CONDUCTOR
LONG BARREL
BELLED END
(Continued)**



UL Listed 90° C,
600 Volts to 35 kV ◆

45° and 90° angles are available.
Please contact Customer Service to order:
1-800-346-4175



Catalog Number	Fig #	Conductor		Stud Hole Size	Tongue Width	Figure Dimensions			Dieless (# of crimps)	▲ Installation Tooling				Wire Strip Length	
		AWG	MM ²			(B)	(T)	(L)		Mechanical MD6, OUR840, MD7-34R	Hydraulic BCT500HS, Y500CTHS	Y35, Y39, Y750 Y46*, PAT750	Color Code		Die Index
YAV25-TC10-FXB	1	275/24 1/0 Weld 1/0 AWG	50	8-10	.83"	1.50"	.12"	2.44"	W25VT (4)	W25VT (4)	U25RT (2)	Pink	12	1-9/16"	
YAV25-TC516-FXB	1			5/16"				2.63"							
YAV25-TC38-FXB	1			3/8"				2.75"							
YAV25-TC12-FXB	1			1/2"				3.19"							
YAV26-TC38-FXB	1	352/24 2/0 Weld 2/0 AWG	70	3/8"	.93"	1.63"	.13"	2.94"	W26VT (4)	W26VT (4)	U26RT (2)	Black	13	1-13/16"	
YAV26-TC12-FXB	1			1/2"				3.37"							
YAV27-TC12-FXB	1	3/0 AWG 450/24 3/0 Weld	95	1/2"	1.10"	1.64"	.14"	3.43"	W27VT (4)	W27VT (4)	U27RT (2)	Orange	14	1-13/16"	
YAV28-TC38-FXB	1	550/24 4/0 Weld 4/0 AWG 250 Flex	120	3/8"	1.12"	1.77"	.14"	3.17"	W28VT (4)	W28VT (4)	U28RT (2)	Purple	15	1-7/8"	
YAV28-TC12-FXB	1			1/2"				3.61"							
YA30-TC12-FXB	1	Class G 259 str. Class H 427 str. 250 Flex		1/2"	1.20"	2.16"	.16"	4.02"	W29VT (4)	W29VT (4)	U29RT (2)	Yellow	16	2-1/4"	
YA31-TC12-FXB	1	637/24 Class I,K,M	150	1/2"	1.28"	2.18"	.18"	4.08"	W30VT (4)	W30VT (4)	U30RT (4)	White	17	2-1/4"	
YA32-TC12-FXB	1	313.1 kcmil	185	1/2"	1.38"	2.32"	.19"	4.28"	W31VT (4)	W31VT (4)	U31RT (4)	Red	18	2-1/4"	
YA34-TC12-FXB	1	373.7 kcmil 925/24	240	1/2"	1.50"	2.48"	.23"	4.54"	W32VT (4)	W32VT (4)	U32RT (4)	Blue	19	2-9/16"	
YA36-TC12-FXB	1	444.4 kcmil		1/2"	1.69"	2.95"	.26"	5.09"	W33VT (4)	W33VT (4)	U33RT (4)	Brown	20	3-1/16"	
YA36-TC58-FXB	1	1100/24		5/8"				5.15"							
YA38-TC58-FXB	1	535.3 kcmil 1325/24	300	5/8"	1.81"	3.08"	.27"	5.32"	—	—	U38XRT (4)	Pink	L99	3-3/16"	
YA40-TC58-FXB	1	646 kcmil - 1600/24	400	5/8"	1.95"	3.24"	.30"	5.53"	—	—	U39RT (4)	Black	24	3-5/16"	
YA44-TC58-FXB	1	777.7 kcmil - 1925/24	500	5/8"	2.17"	3.33"	.33"	5.71"	—	—	U44XRT (4)	Yellow	L115	3-7/16"	
YA46-TC58-FXB	1	1111 kcmil		5/8"	2.69"	3.58"	.39"	6.19"	—	—	**P45RT (4)	Yellow	29	3-11/16"	

* Use PUADP-1 adapter with U dies in Y46 HYPRESS™

** The 16 MM² and 120 MM² referenced here are for both Class 2 and Class 5 conductor.

*** The MM² conductor sizes listed are the recommendations for Class 5 conductor.

‡ P44RT for use with Y46 HYPRESS™ only. PUADP-1 adapter not required.

▲ See tooling section of this catalog for complete tool and die listings. Use ONLY color-coded die recommendations

for -FX connectors. For nest/indenter system contact factory.

◆ For applications greater than 2000 Volts consult cable manufacturer for voltage stress relief instructions.

Note: All dimensions shown are for reference only.

Blue highlighted items are industry standard and most frequently ordered.